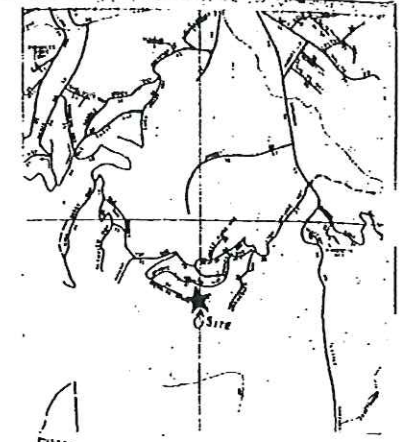
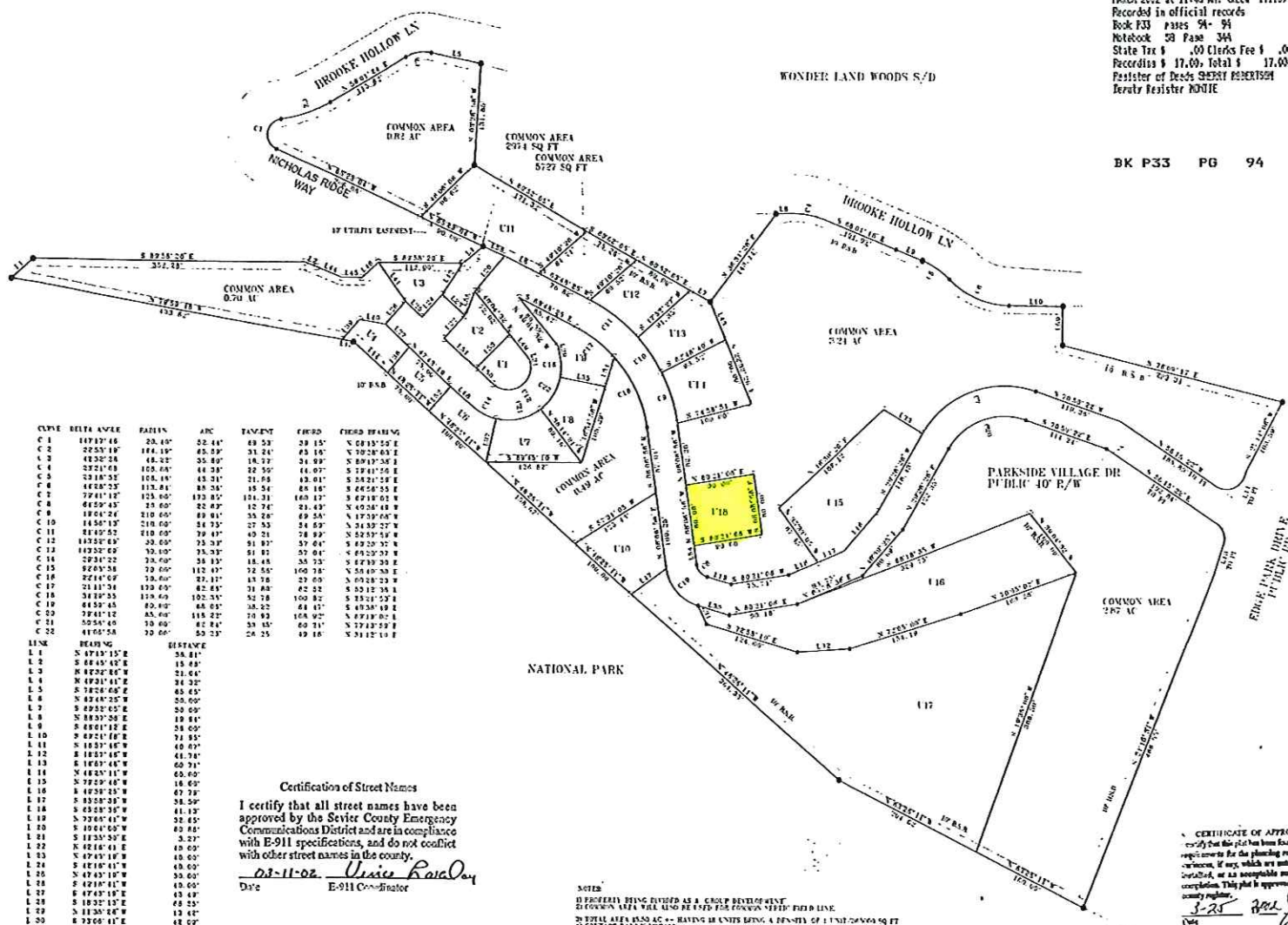


State of Tennessee County of SEVIER  
 Received for record the 28 day of  
 MARCH 2002 at 11:45 AM. GLEN 17115)  
 Recorded in official records  
 Book P33 Pages 94-94  
 Notebook 28 Page 344  
 State Tax \$ .00 Clerks Fee \$ .00  
 Recordings \$ 17.00 Total \$ 17.00  
 Registrar of Deeds SHERRI ROBERTSON  
 Deputy Registrar NODIE



BK P33 PG 94



TYPE	BEARING	ANGLE	ARC	TANGENT	FIELD	FIELD BEARING
C 1	N 07°13'16"	28.44°	52.41'	43.52'	29.15'	N 01°15'25"E
C 2	S 25°53'18"	184.16°	65.59'	31.24'	43.15'	N 70°28'03"E
C 3	S 48°32'58"	48.22°	35.89'	18.72'	31.89'	S 89°17'50"E
C 4	S 25°14'00"	105.00°	44.28'	12.50'	14.07'	S 78°17'50"E
C 5	S 13°18'53"	108.16°	43.31'	21.58'	13.01'	S 54°21'58"E
C 6	S 48°32'58"	115.81°	89.26'	15.54'	84.16'	S 62°56'55"E
C 7	S 29°11'12"	125.90°	129.85'	114.31'	140.12'	S 67°18'03"E
C 8	S 48°32'58"	75.60°	82.83'	12.74'	21.43'	N 40°28'48"E
C 9	S 18°04'24"	210.00°	89.81'	35.28'	49.24'	N 73°59'08"E
C 10	S 48°32'58"	210.00°	84.25'	27.53'	34.63'	N 34°30'22"E
C 11	S 18°04'24"	210.00°	79.47'	49.21'	78.89'	N 52°57'58"E
C 12	S 48°32'58"	210.00°	75.29'	91.87'	129.29'	N 67°25'58"E
C 13	S 48°32'58"	210.00°	75.29'	91.87'	129.29'	N 67°25'58"E
C 14	S 48°32'58"	210.00°	75.29'	91.87'	129.29'	N 67°25'58"E
C 15	S 48°32'58"	210.00°	75.29'	91.87'	129.29'	N 67°25'58"E
C 16	S 48°32'58"	210.00°	75.29'	91.87'	129.29'	N 67°25'58"E
C 17	S 48°32'58"	210.00°	75.29'	91.87'	129.29'	N 67°25'58"E
C 18	S 48°32'58"	210.00°	75.29'	91.87'	129.29'	N 67°25'58"E
C 19	S 48°32'58"	210.00°	75.29'	91.87'	129.29'	N 67°25'58"E
C 20	S 48°32'58"	210.00°	75.29'	91.87'	129.29'	N 67°25'58"E
C 21	S 48°32'58"	210.00°	75.29'	91.87'	129.29'	N 67°25'58"E
C 22	S 48°32'58"	210.00°	75.29'	91.87'	129.29'	N 67°25'58"E

**FINAL**  
 Approved as hereby created by the **PAD 18 SITES** added to **PARKSIDE VILLAGE** in Sevier County, Tennessee as being suitable for subsurface sewage disposal (SSD) with the listed street locations. Plans for any construction of a structure, mobile or permanent, for the use of such structure located on the site must be approved and a SSD system permit issued by the District of Environmental Health, Water, and Sewer, under permit conditions and otherwise as shown on the site plan property lines and otherwise noted. Any change, filing or alteration of the lot conditions may void this approval.  
 Michael F. Isinger 3-21-02  
 District Environmental Health  
 Sevier County Health Department  
 Date  
**Lot 18 SITES**  
 are approved for standard individual subsurface sewage disposal system serving a maximum of 40 bedrooms.  
 House size location and design will determine the actual number of bedrooms for which a permit may be issued.  
**HEALTH DEPT. RESTRICTIONS:**  
 1) SITE PLAN WITH SEWAGE SYSTEM LOCATION ON FILE  
 2) APPROVAL CONTINGENT ON RECORDED HOMEOWNERS ASSOCIATION.

LINE	BEARING	DISTANCE
L 1	S 97°13'15"E	56.81'
L 2	S 88°45'45"E	18.49'
L 3	N 87°23'18"W	21.64'
L 4	N 89°21'41"E	24.32'
L 5	S 78°28'08"E	60.45'
L 6	N 83°04'25"W	26.60'
L 7	S 89°21'41"E	20.69'
L 8	N 88°57'58"E	18.84'
L 9	S 89°01'12"E	58.60'
L 10	S 89°21'41"E	71.84'
L 11	S 103°37'18"W	40.05'
L 12	N 103°37'18"E	41.74'
L 13	S 103°37'18"E	60.31'
L 14	N 48°25'11"W	60.60'
L 15	S 79°23'48"W	16.60'
L 16	N 103°37'18"E	47.79'
L 17	S 83°28'38"W	38.50'
L 18	S 83°28'38"W	41.13'
L 19	S 79°23'48"W	32.55'
L 20	S 104°41'09"W	40.88'
L 21	S 113°33'59"E	3.27'
L 22	N 02°14'12"E	40.00'
L 23	S 47°43'18"W	40.00'
L 24	S 47°43'18"W	40.00'
L 25	S 47°43'18"W	40.00'
L 26	S 47°43'18"W	40.00'
L 27	S 47°43'18"W	40.00'
L 28	S 47°43'18"W	40.00'
L 29	S 47°43'18"W	40.00'
L 30	S 47°43'18"W	40.00'
L 31	S 47°43'18"W	40.00'
L 32	S 47°43'18"W	40.00'
L 33	S 47°43'18"W	40.00'
L 34	S 47°43'18"W	40.00'
L 35	S 47°43'18"W	40.00'
L 36	S 47°43'18"W	40.00'
L 37	S 47°43'18"W	40.00'
L 38	S 47°43'18"W	40.00'
L 39	S 47°43'18"W	40.00'
L 40	S 47°43'18"W	40.00'
L 41	S 47°43'18"W	40.00'
L 42	S 47°43'18"W	40.00'
L 43	S 47°43'18"W	40.00'
L 44	S 47°43'18"W	40.00'
L 45	S 47°43'18"W	40.00'
L 46	S 47°43'18"W	40.00'
L 47	S 47°43'18"W	40.00'
L 48	S 47°43'18"W	40.00'
L 49	S 47°43'18"W	40.00'
L 50	S 47°43'18"W	40.00'
L 51	S 47°43'18"W	40.00'
L 52	S 47°43'18"W	40.00'
L 53	S 47°43'18"W	40.00'
L 54	S 47°43'18"W	40.00'
L 55	S 47°43'18"W	40.00'
L 56	S 47°43'18"W	40.00'
L 57	S 47°43'18"W	40.00'
L 58	S 47°43'18"W	40.00'
L 59	S 47°43'18"W	40.00'
L 60	S 47°43'18"W	40.00'

**Certification of Street Names**  
 I certify that all street names have been approved by the Sevier County Emergency Communications District and are in compliance with E-911 specifications, and do not conflict with other street names in the county.  
 03-11-02 *Ulice Rowley*  
 Date E-911 Coordinator

UNIT	AREA
1	3057 SQ FT
2	3273 SQ FT
3	4500 SQ FT
4	3021 SQ FT
5	3271 SQ FT
6	3093 SQ FT
7	5775 SQ FT
8	5110 SQ FT
9	5208 SQ FT
10	8515 SQ FT
11	11115 SQ FT
12	4311 SQ FT
13	6331 SQ FT
14	7235 SQ FT
15	17391 SQ FT
16	35243 SQ FT
17	87291 SQ FT
18	2191 SQ FT

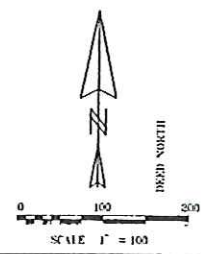
NOTED:  
 1) PROPERTY BEING DIVIDED AS A GROUP DEVELOPMENT  
 2) COMMON AREA WILL ALSO BE USED FOR COMMON NEIGH' FIELD LINE  
 3) TOTAL AREA (P33) AC +- HAVING 18 UNITS BEING A BENEFIT OF 1 UNIT/2000 SQ FT  
 4) CONTACT: MICHAEL F. ISINGER  
 5) PHONE: 423-3388

Warmal Deeds DL42 pg 347  
 DL58 pg 71  
 DL82 pg 102  
 DL110 pg 226

I HEREBY CERTIFY THAT I HAVE CONSULTED THE FEMA FLOOD MAP AND HAVE FOUND THAT THE ASSA'S PROPERTY IS NOT LOCATED IN THE 100 YEAR FLOOD ZONE.

Microfilmed By:  
 Pleasant Valley  
 Microfilming Services  
 3810 Pleasant Valley Road  
 Cosby, TN 37722  
 Ph: # (423) 487-3464

**CERTIFICATE OF APPROVAL FOR RECORDING**  
 I hereby certify that this is a field survey to establish the boundary lines, bearings and distances of the subdivision, with the exception of such corrections, if any, which are noted. All improvements have been located, or an acceptable survey posted in order to assure completion. This plat is approved for recording in the office of the county register.  
 3-21-02 *John A. Smith*  
 County Register



**LEGEND**

- EXISTING IRON PIN (EIP)
- NEW IRON PIN (NIP)
- NOT SET OR INACCESSIBLE POINT

**PARKSIDE VILLAGE**

DISTRICT 6 SEVIER CO. TENN.  
 DATE: 01-05-2002 JOB NO. 15929

PREPARED BY: KERRY NEAL AND RAY WATSON  
 PREPARED FOR:

LITTLE RIVER SURVEYING CO  
 7835 E. LAMAR ALEXANDER PKWY  
 P.O. BOX 358  
 TOWNSEND, TENNESSEE 37782  
 665-418-6013